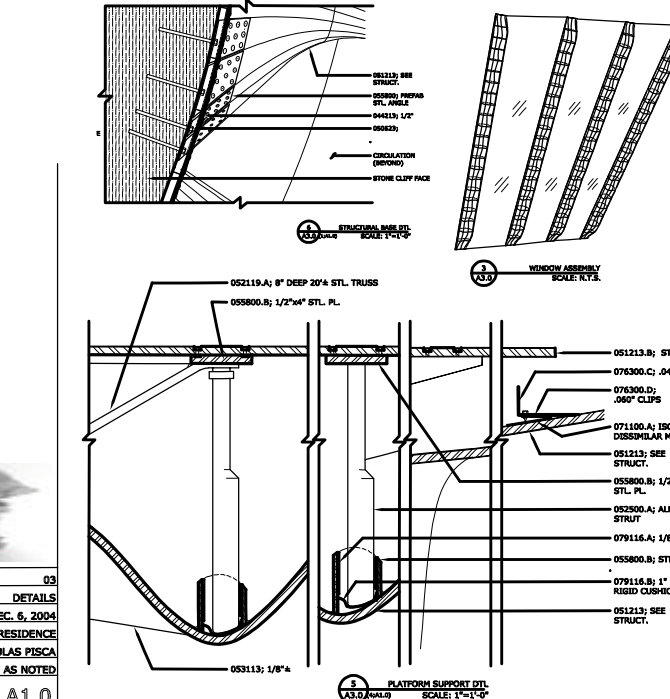
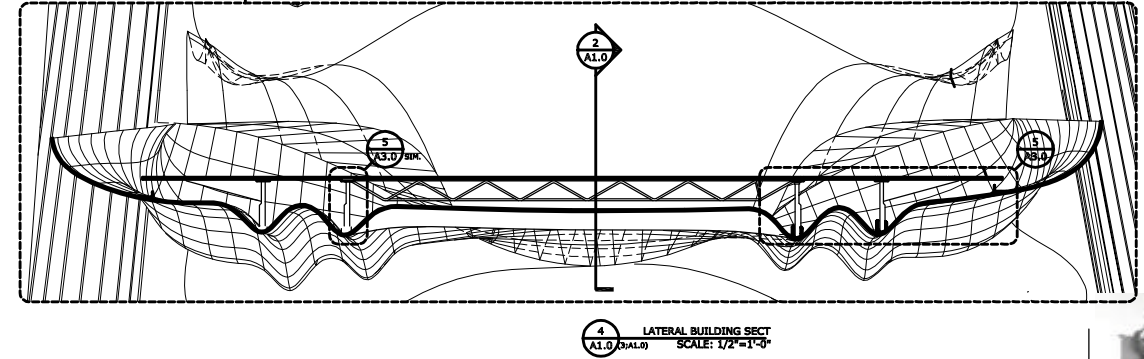
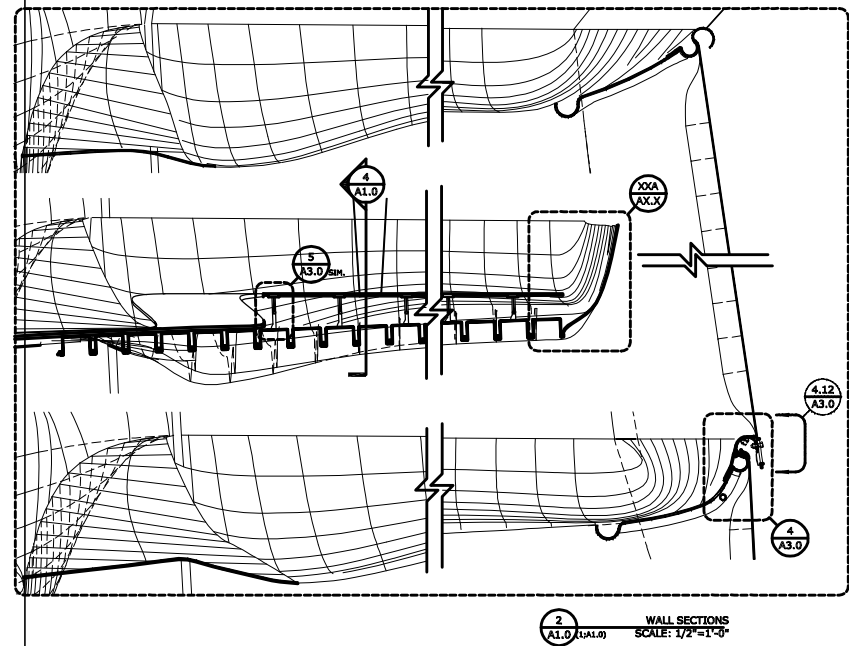
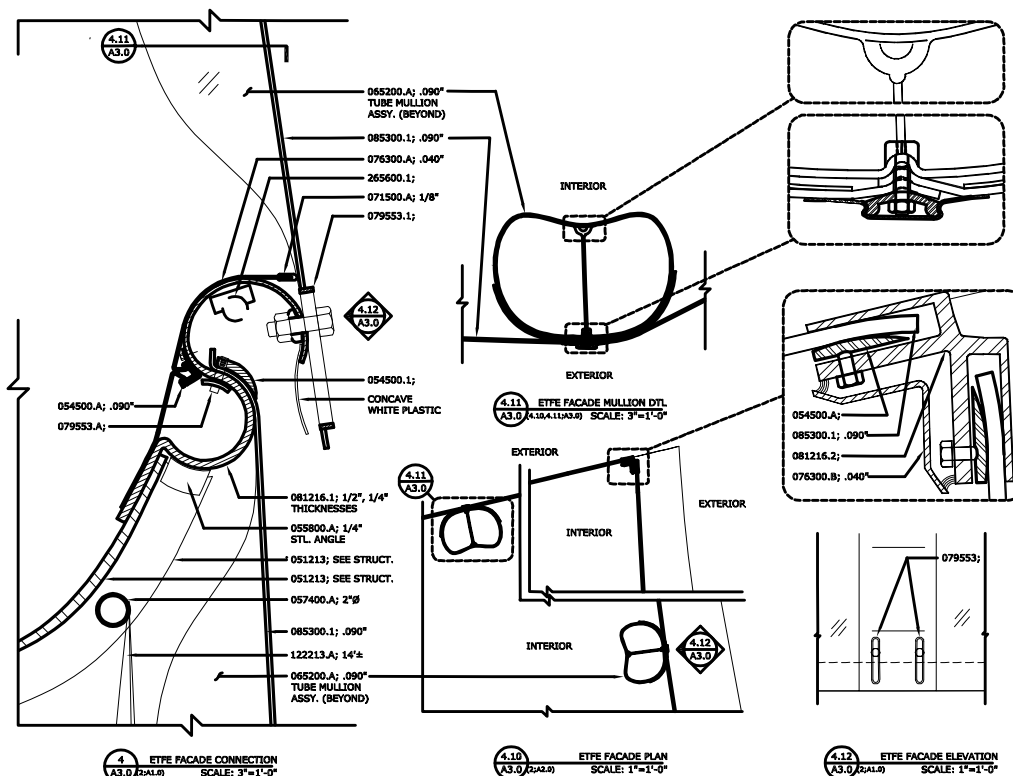
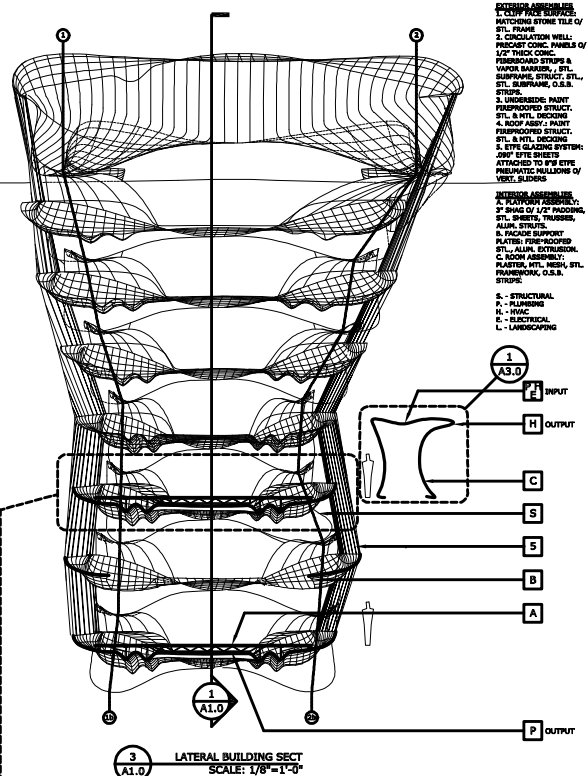
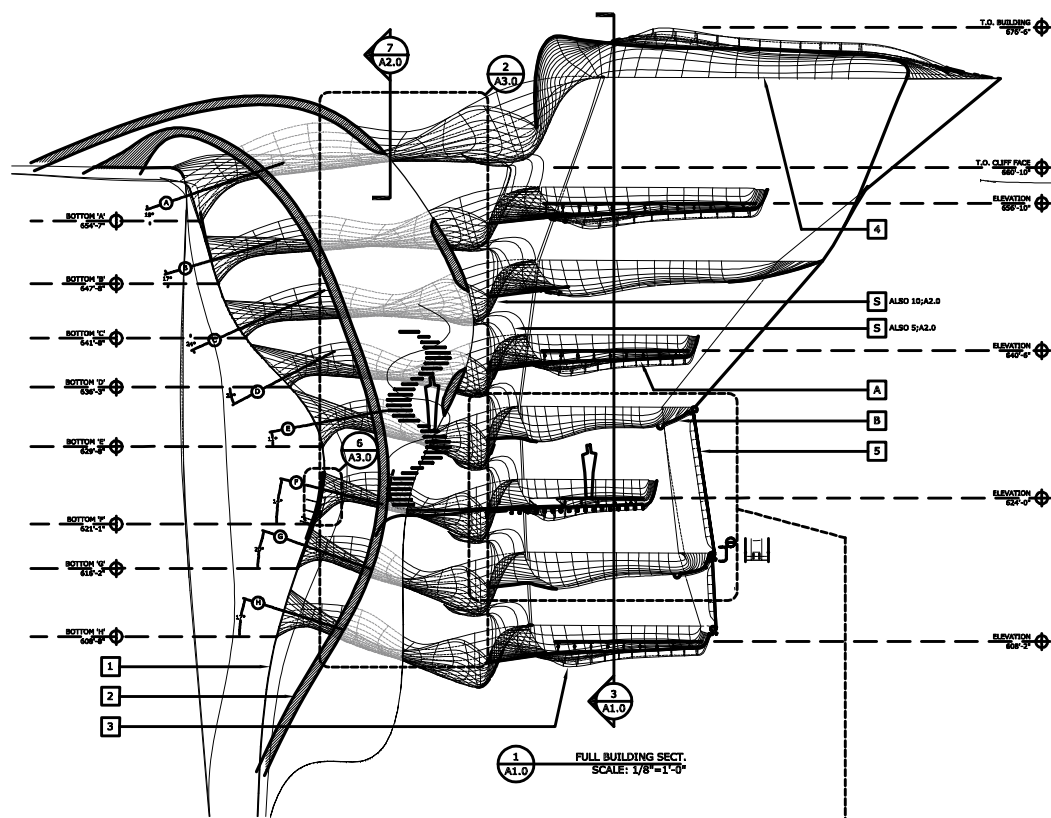
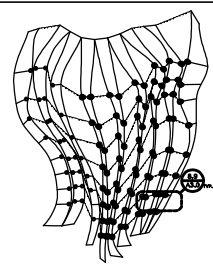


Construction Portfolio

experience:  
2005-6 Gehry Technologies  
2005 Xefrotarch  
2003-4 Mudrovich Architects  
2002 Project Inc.  
2002 Flad & Associates

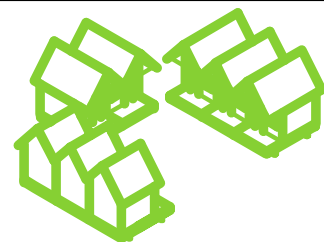
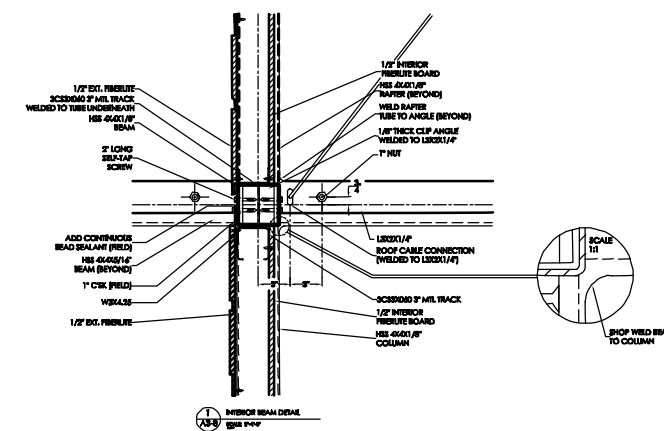
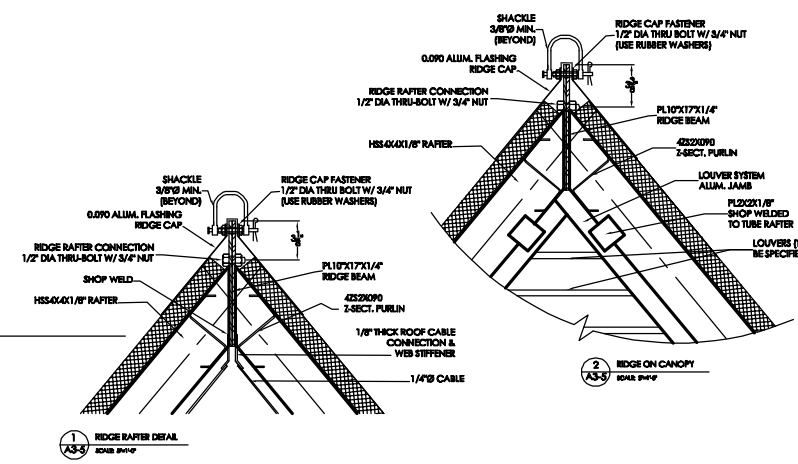
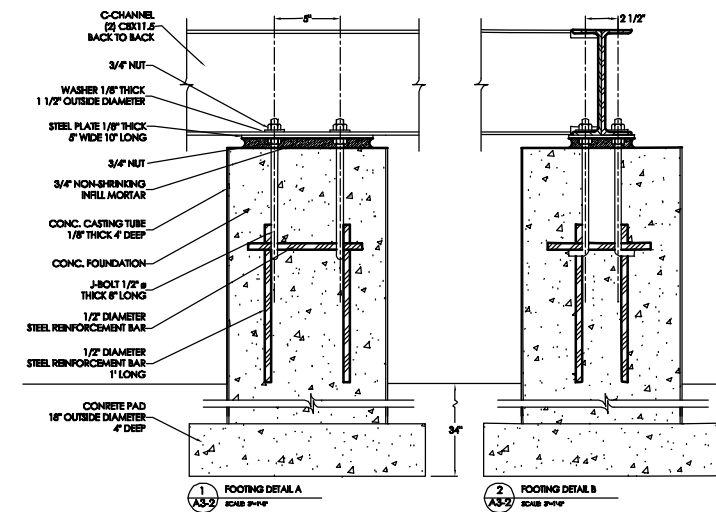
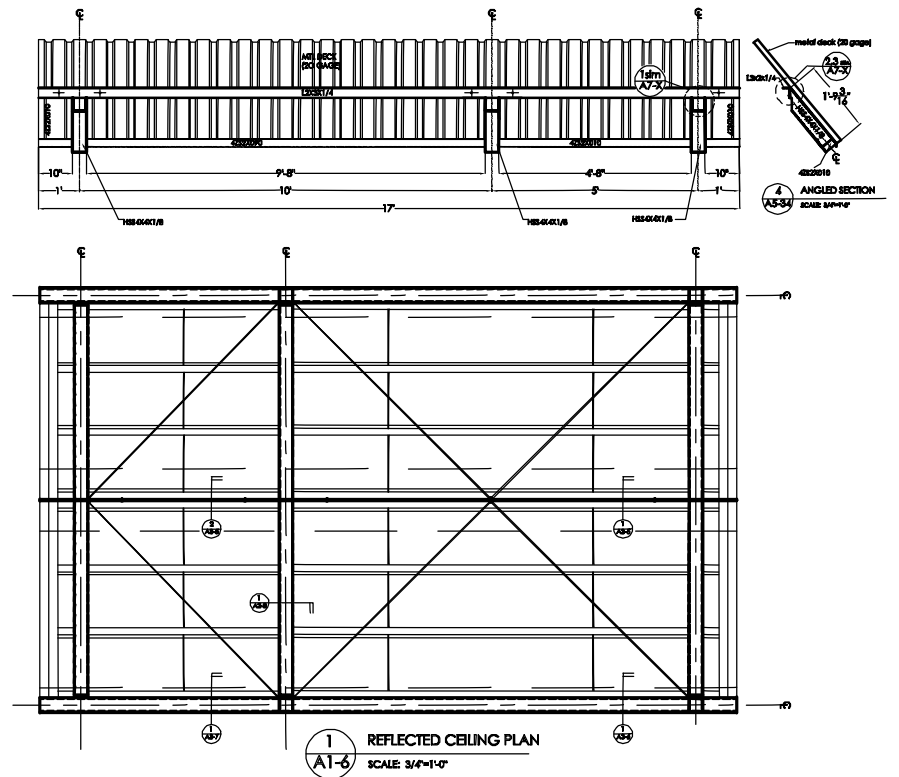
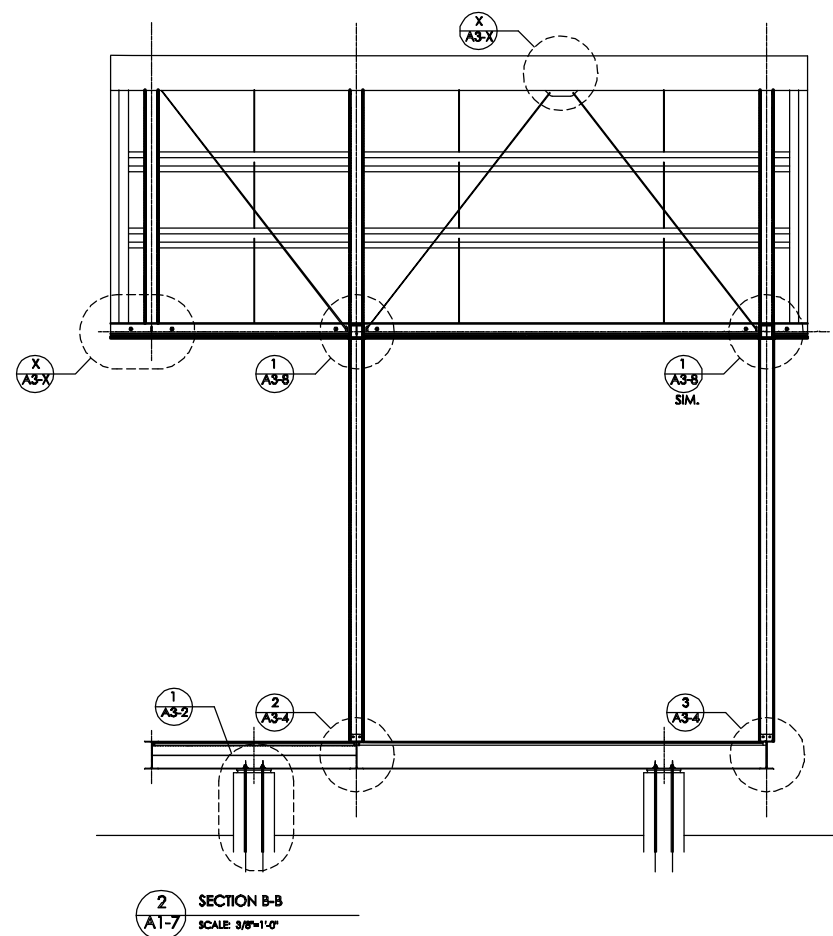
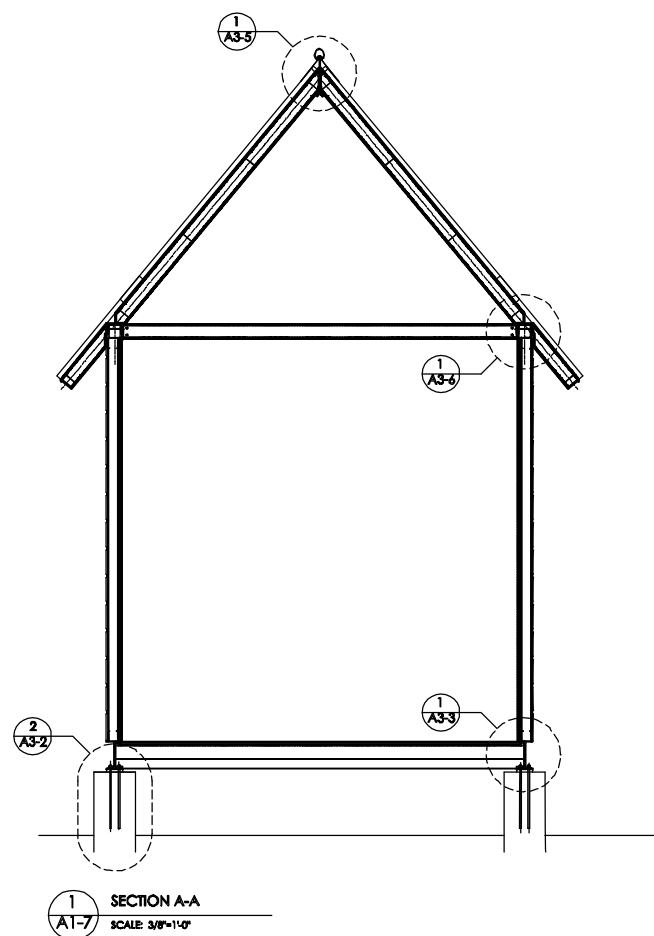


01	03
DRAWING	DETAILS
DATE	DEC. 6, 2004
PROJECT	RESIDENCE
DRAWN BY	NICHOLAS PISCA
SCALE	AS NOTED
SHEET	A1.0



**Cliffside Residence Proposal**  
Arizona Desert

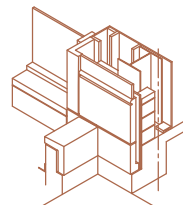
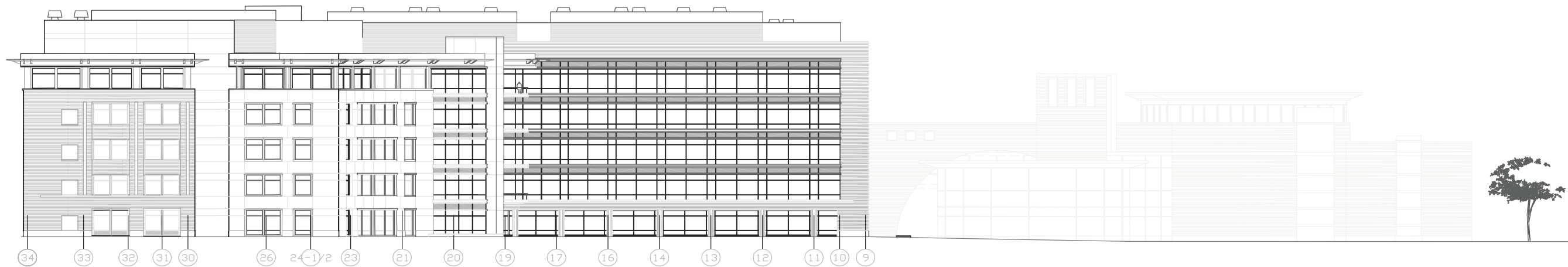
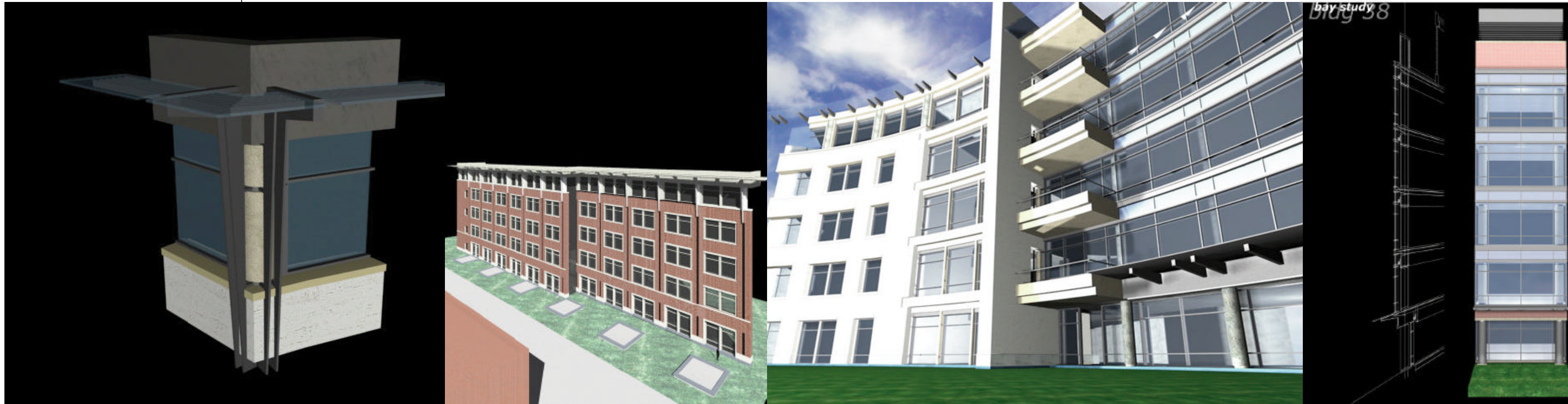
responsibilities: design, schematic design to construction documents [elevations, plans, sections, details, 3D modeling, etc.]  
information: multi-story cliffside tower. approach the building from the top story and traverse the body down; public spaces devolve to private. rooms are determined thru a loose gestalt, where a component divider allocated space. structural integrity is based on dozens of strips welded together to make a doubly-curved surface--these 'plates' are pinned to the rock face and locked with the floor above it.



Los Guidos Orphanage  
San Jose, Costa Rica

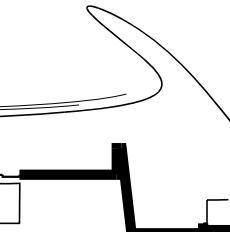
responsibilities: project management; structural design, design development, & construction document. [detailing, structural analysis, structural drawings, steel calculations, complete shop set, etc.]  
information: made to look like a child's conception of a house, this is an orphanage in a poor suburb of San Jose. it is designed to be prefab, so that construction can be accurate and quickly built. [prototype was completed in a matter of hours]. all cabins consist of 9 panels that combine to make left, middle and right configurations.

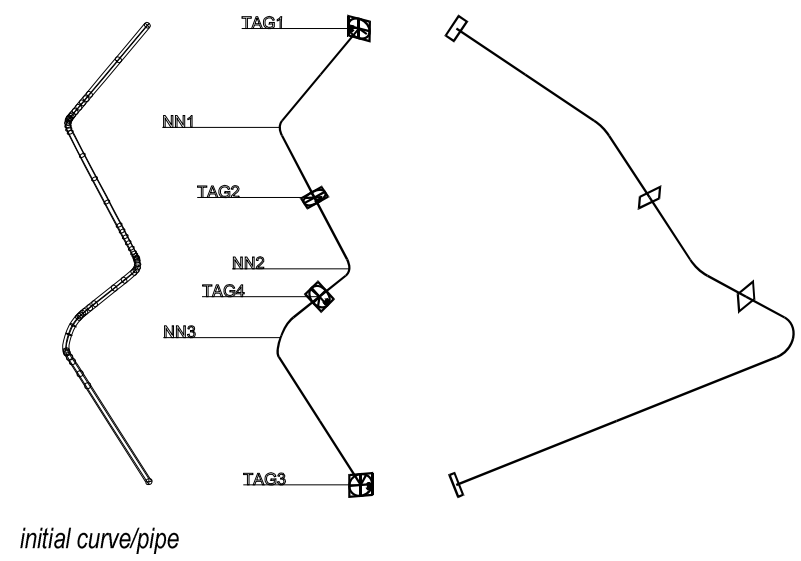




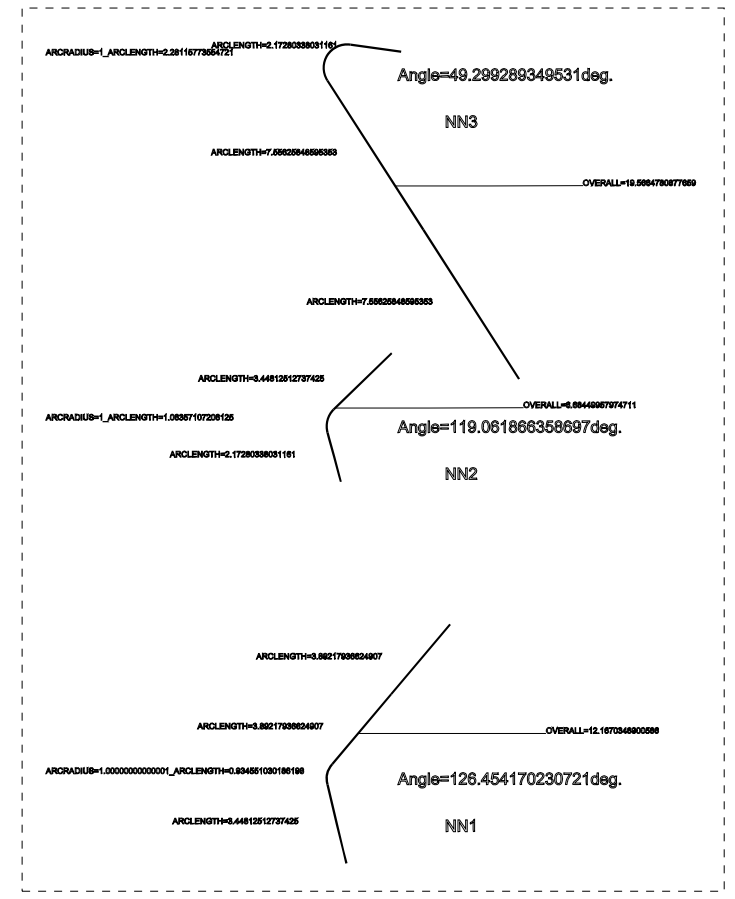
**Building 38  
Facade Studies**

responsibilities: drafting, facade studies [elevations, 3D modeling, etc.]  
 information: pharmaceutical campus containing former Flad buildings.  
 produced dozens of facade variations to best orient inhabitants to pre-determined vantage points, while maintaining the company aesthetic.



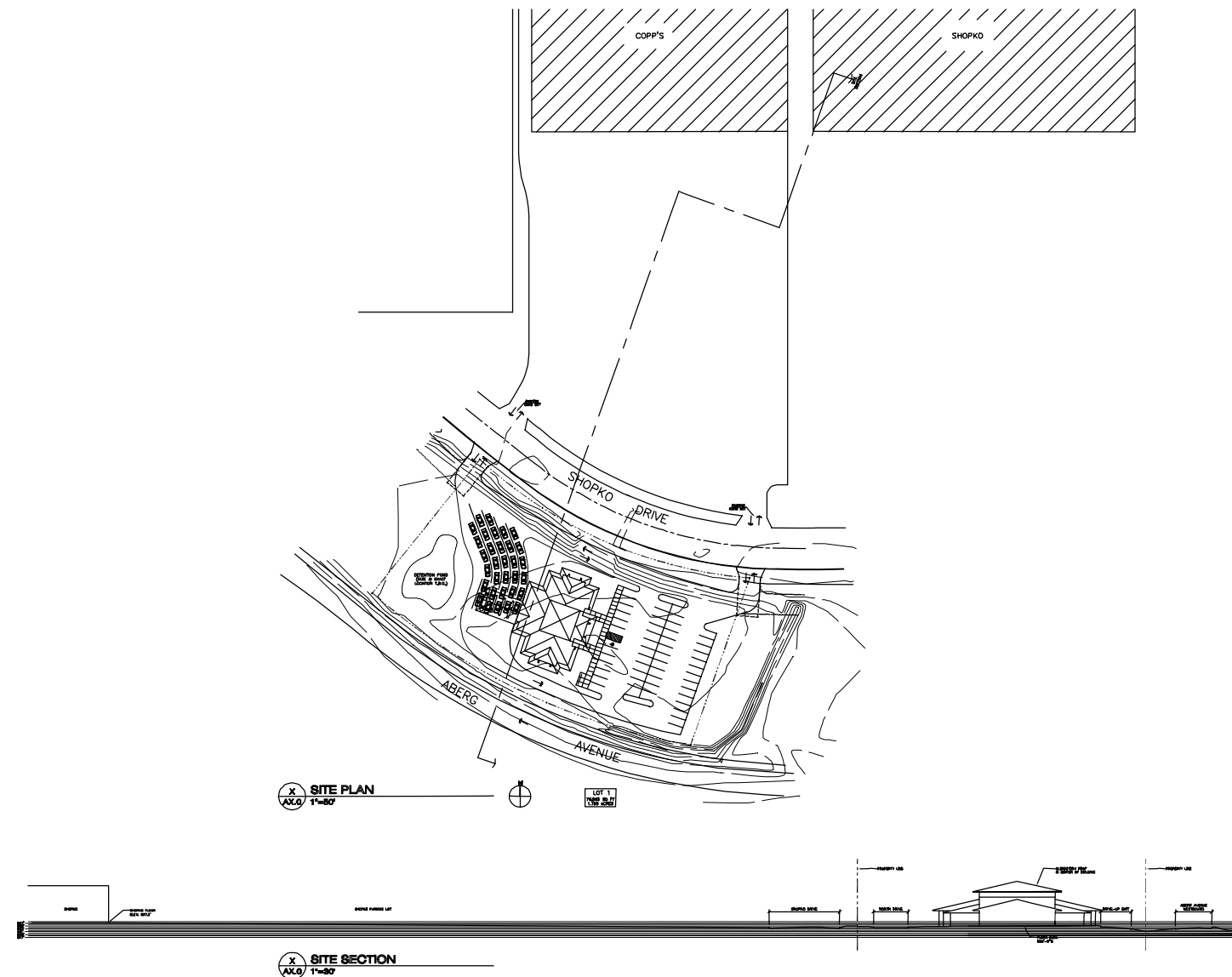
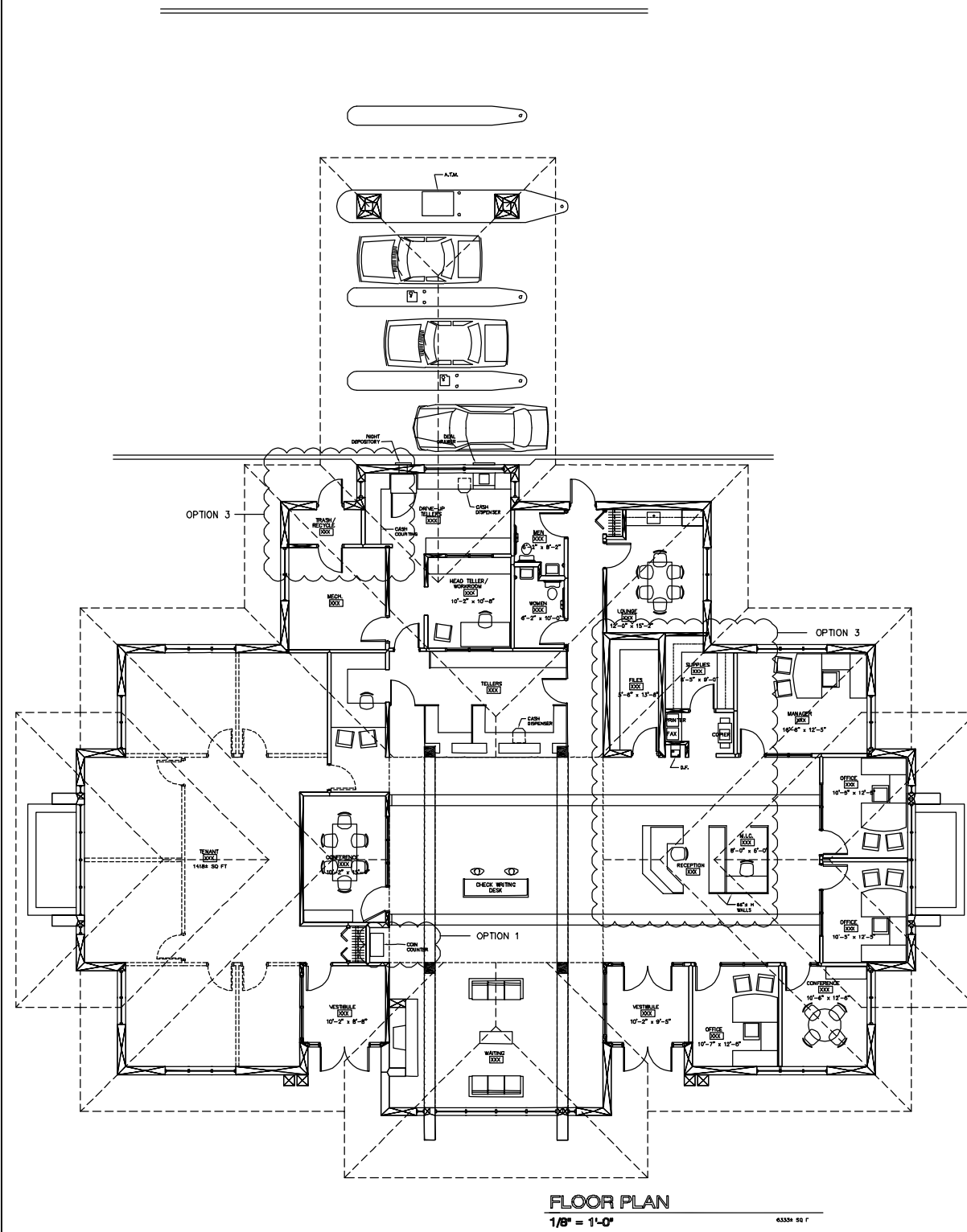


Twist1.55957995986125		T1
		T2
		T3
Twist69.5077964348722		T4



Sur  
PS1 exhibit

responsibilities: structural logic, scripting [code]  
 information: developed a method of breaking down nurbs curve geometry. took that process and created a script to automate the construction document process. lengths, angles, arcs, & twists were extracted from the digital model, and plans, sections, & dimensions were dropped onto an 11x17 sheet for each aluminum pipe.



Heritage Credit Union  
Madison, WI

responsibilities: drafting, design development and site analysis [plans, parking lot, drive-up, elevations, ceiling, roof, interior elev., sections, etc.]  
information: project is situated in a Madison suburb. this project introduces various stages of use, eventually leaving room for a rental space or expansion capability. bi-axial plan meshes the main lobby with secondary services.